

NEW



RÖHM VICE NOVELTIES

RKE-M and RZM (size 92)

RÖHM
driven by technology

NC-COMPACT-VICE RKE-M

APPLICATION

Particularly suitable for use on machining centers and palletisers.

TYPE

Clamping system mechanical without power transmitter, manually operated.

CUSTOMER BENEFITS

- ④ Horizontal, side or in connection with a base plate vertical mounting, for example as DUO clamping tower (back to back)
- ④ Sturdy chip protection prevents chips from penetrating
- ④ Large clamping stroke
- ④ Clamping surface for clamping jaws
- ④ Central lubrication of guides and spindle thread
- ④ Constant clamping force for every clamping operation and high clamping repeatability when a torque wrench is used

TECHNICAL FEATURES

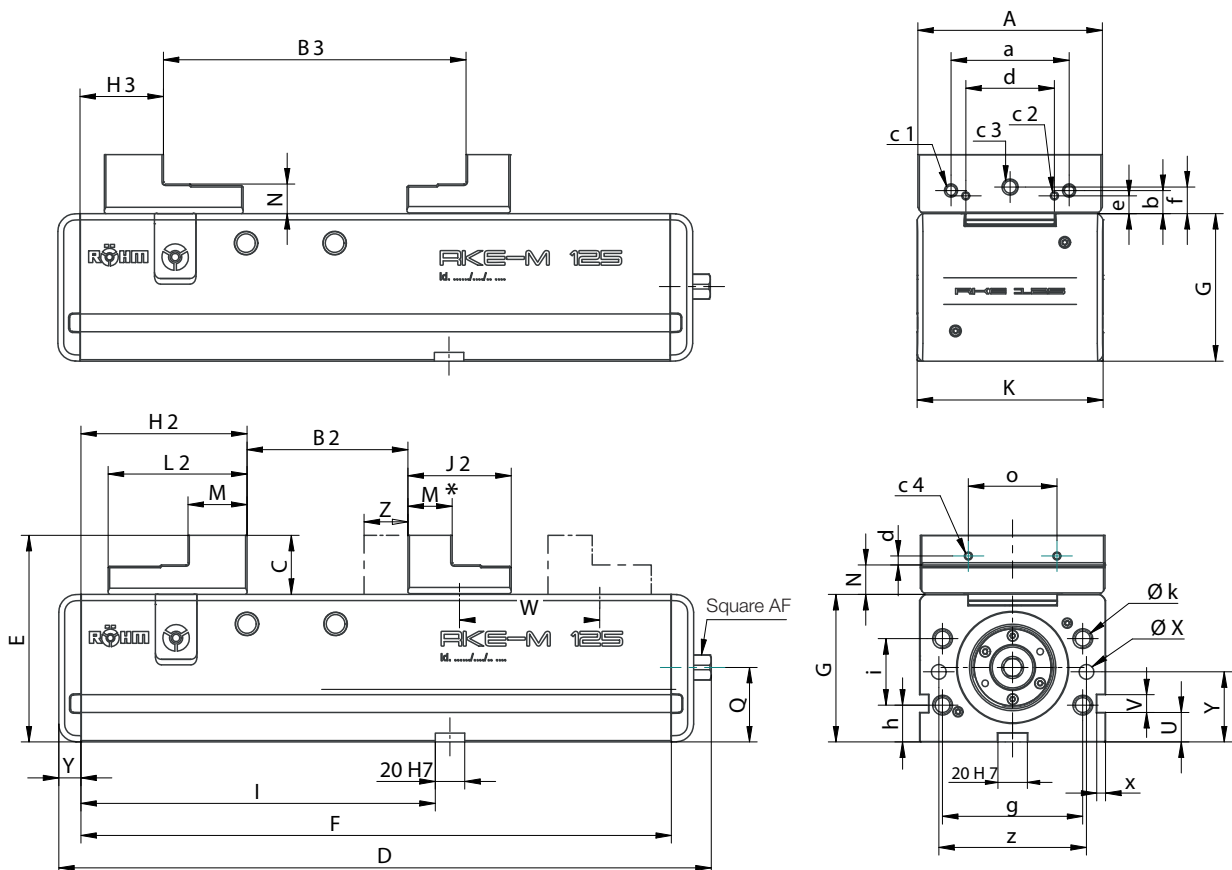
- Sturdy steel body and all guides are hardened and ground on all sides
- Long clamping slide with cross slots, hardened on all sides, functional surfaces ground
- Threaded bores for taking up all RÖHM flat clamping jaws with jaw width 125/160 mm



A32
RKE-M, with stepped jaws

Item No.	182137	182138	182139	182140
Jaw width A mm	92	125	160	200
Jaw design	stepped jaws	stepped jaws	stepped jaws	stepped jaws
B2 mm	0-138	0 - 216	0 - 320	0 - 315
B3 mm	71-208	97 - 312	131 - 451	131 - 451
C mm	32	40	50	60
D mm	315	442	607	607
E mm	112	140	165	175
F mm	276	400	530	530
G _{0,02} mm	80	100	115	115
H2 mm	80	112,5	130	135
H3 mm	41	56,5	64	64
J2 mm	56	70	97	97
K mm	94	126	162	162
L2 mm	64	94	98	103
M mm	25	40	34	39
M* mm	25	30	32,5	32,5
N _{0,01} mm	16	20	25	25
U mm	20	20	20	20
V mm	12	12	12	12
W mm	68	1x108	2x102,5	2x102,5
X mm	15	15	15	15
Y mm	10	10	10	10
Z mm	70	109	117	117
a mm	63	80	100	125
b mm	13,6	15,6	19,6	24,6
c1	M 6x14	M 8x14	M 8x14	M 10x15
c2	M 5x9	M 5x10	M 5x9	M 5x10
c3	M 10x16	M 10x18	M 10x18	M 14x20
d mm	48	60	80	110
e mm	8	12	12	12
f mm	14	18	20	25
g mm	70	95	125	125
Ø k	M10x18	M 12x22	M 16x25	M 16x25
l mm	140	240	200	200
m2±0,02 mm	60	127,5	70	65
n±0,02 mm	99	183,5	136	136
y ^{+0,01} mm	40	47,5	57,5	57,5
z mm	72	100	135	135
Square AF	12	14	19	19
Ø X ^{H7}	10	10	10	10
Clamping force kN	25	40	60	60
Weight kg	15	41	79	85

NC-COMPACT-VICE RKE-M



NC-COMPACT SELF CENTERING VICE RZM 92



APPLICATION

Optimized for 5-axis machining.

TYPE

Clamping system mechanical without power transmitter, manually operated.
Centric clamping with two moving jaws.

CUSTOMER BENEFITS

- ⊕ Ideal guidance characteristics of the jaws thanks to patented guidance system
- ⊕ Very large clamping stroke
- ⊕ Open design for optimized chip flow, which permits easy cleaning, even after heavy duty machining
- ⊕ Constant clamping force for every clamping operation and high clamping repeatability when a torque wrench is used
- ⊕ Optimally suitable for use of SKB clawed jaws. These top jaws can securely clamp raw and sawed parts with a max. strength of up to 900 N/mm² to a cutting depth of 2.5 mm.

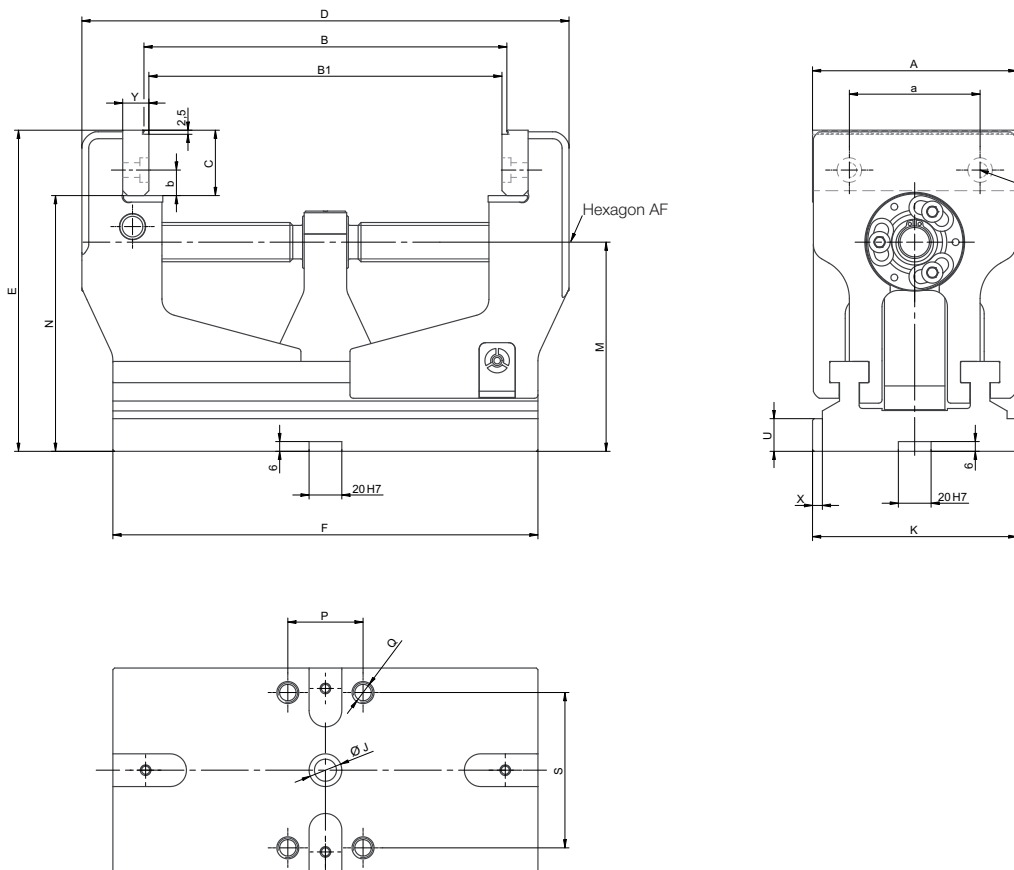
TECHNICAL FEATURES

- Steel basic body hardened and ground
- Highly positioned clamping jaw
- Top spindle lying near the clamping jaws for optimal force transfer
- Long jaw guide and compact design
- Including SKB clawed jaws
- Clamping repeatability 0.02 mm

A32
RZM, with SKB clawed jaws

Item No.	NEW: 182230	NEW: 182231	178910	178911
Jaw width A mm	92	92	125	125
Design	long design	short design	long design	short design
B min.	24	24	23	23
B max.	160	100	222	142
B1 mm	18-154	18-94	17-216	17-136
C mm	32	32	40	40
D mm	230	170	298	218
E mm	174	174	196,5	196,5
F mm	200	200	260	180
Ø J x depth mm	Ø20 ^{H7/6}	Ø20 ^{H7/6}	Ø20 ^{H7/6}	Ø20 ^{H7/6}
K mm	94	94	125	125
M mm	120	120	128	128
N mm	142	142	156,5	156,5
U mm	20	20	20	20
X mm	6	6	6	6
Hexagon AF	10	10	12	12
Clamping force kN	20	20	25	25
Tightening torque Nm			150	150
Weight kg	11,7	11,5	20,3	17,4

NC-COMPACT SELF CENTERING VICE RZM 92



TORQUE WRENCH

APPLICATION

For the defined direction of clamping force in vices.

TYPE

Torque wrench with DakkS calibration certificate based on DIN EN ISO 6789:2003.

CUSTOMER BENEFITS

- ⊕ Maximum precision thanks to $\pm 3\%$ working accuracy of scaled values (in direction of activation)
- ⊕ Rapid and reliable adjustment of the desired torque value by just turning the hand grip
- ⊕ Ergonomically designed grip with collar reducing risk of slippage and injury

TECHNICAL FEATURES

- Robust and highly durable hard chrome plated steel pipe structure
- User-friendly flex ratchet handle
- Secure locking of hand grip with slewing ring



RÖHM torque wrench, 20-120 Nm

Item No.	Torque range Nm	Length mm	Output	Working accuracy
10004116	20-120	435	12,5=1/2"	3%



RÖHM torque wrench, 60-320 Nm

Item No.	Torque range Nm	Length mm	Output	Working accuracy
10004117	60-320	659	12,5=1/2"	3%

Drive adapter ATA for RKE-M



Item No.	Contents of delivery	Size	Square
168721	piece	92	12-1/2"
161103	piece	125	14-1/2"
161730	piece	160/200	19-1/2"

For the vice RZM a hexagon screwdriver (RZM 92: AF 10 / RZM 125: AF 12) will be needed.

F-SENSO CHUCK FORCE MEASUREMENT DEVICE

The F-senso chuck force measurement device gives you perfect control of the functionality of your clamping tools and vices. Only regular checks can guarantee optimum conditions of use and safety.

GREATEST FLEXIBILITY

- ⊕ Broad clamping range of 75 - 175 mm through interchangeable pressure pins
- ⊕ Broad measuring range from 0 - 100 kN per jaw
- ⊕ Also suitable for the use in a lathe chuck

BEST USER-FRIENDLINESS

- ⊕ Real-time data transmission via Bluetooth to included tablet
- ⊕ No additional attachments necessary on the machine
- ⊕ Intuitive to use with included software

CONFIGURATION PROVEN IN PRACTICE

- ⊕ Easy positioning through positioning aid
- ⊕ Automatic switch-off
- ⊕ Delivered in the practical hard-shell case

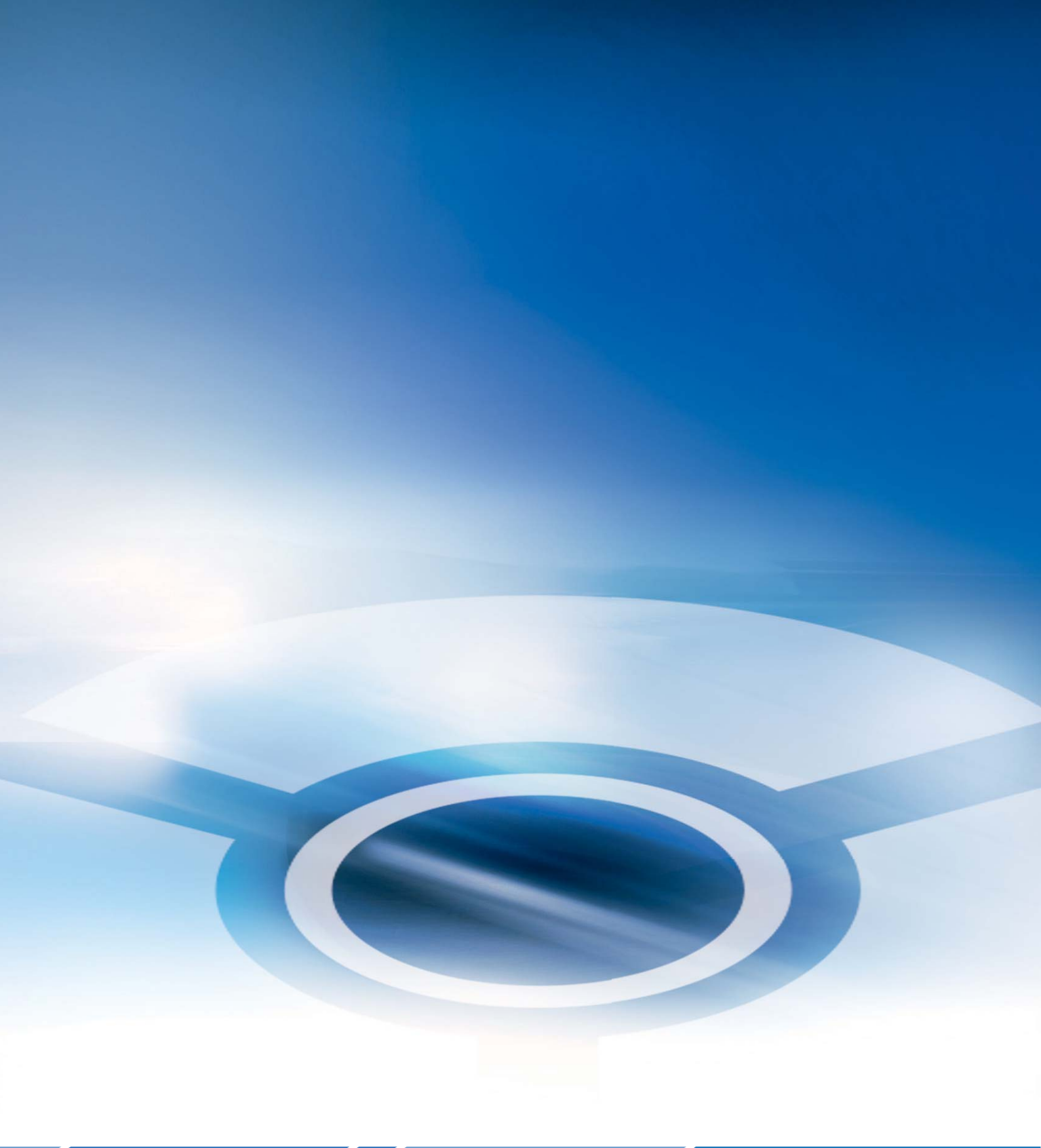


Included with delivery:

- Case with plastic foam inserts
- F-senso chuck force measurement head
- Pressure pins lengths: 5 mm, 15 mm, 25 mm and 30 mm
- Pressure pin extension length: 25 mm
- Practical positioning aid
- Tablet PC with preinstalled measuring and analysis program

F-senso chuck		179800
Measuring range / Clamping force	kN	0 - 200
Accuracy	(F / RPM)	Force <0,5% within the complete measuring range
Clamping diameter	mm	75 - 175
Dimensions	mm	Ø 75/80 x 130





RÖHM GmbH

Heinrich-Röhm-Straße 50

89567 Sontheim/Brenz

Germany

Tel +49 7325 16 0

Fax +49 7325 16 510

info@roehm.biz

www.roehm.biz



Id.-No. 1242446 / 0917 B